

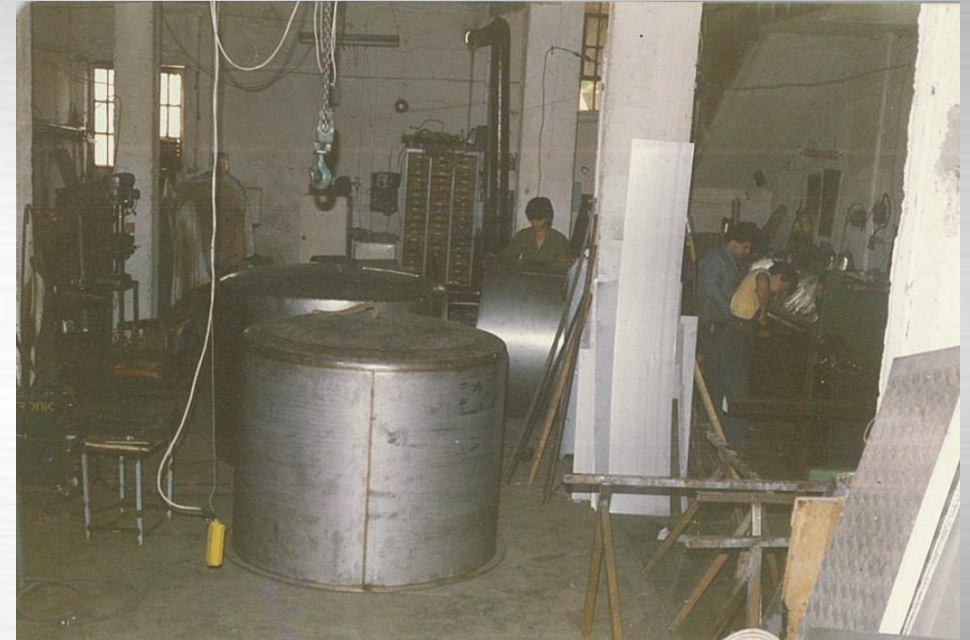




**INOX STEEL TECHNICAL is a Greek manufacturing company active in the field of stainless steel machinery for the dairy and food industry. It was founded in 1984 by Anastasios Kapnopolis and Spiros Papafloratos, and since then it has a strong presence both in the domestic market and abroad, being one of the most stable and fast growing company in its field. The main goal for INOX STEEL TECHNICAL is to create relationships of trust and duration with its customers, supporting them and proposing favorable and economical solutions. The ideal value for money, technical support services and innovative technological solutions are just some of the services we offer. Its policy is to produce and supply customers with products that fully meet their quality requirements, as they are shaped over time and described in international, European or national standards and guidelines.**

## HISTORICAL BACKGROUND

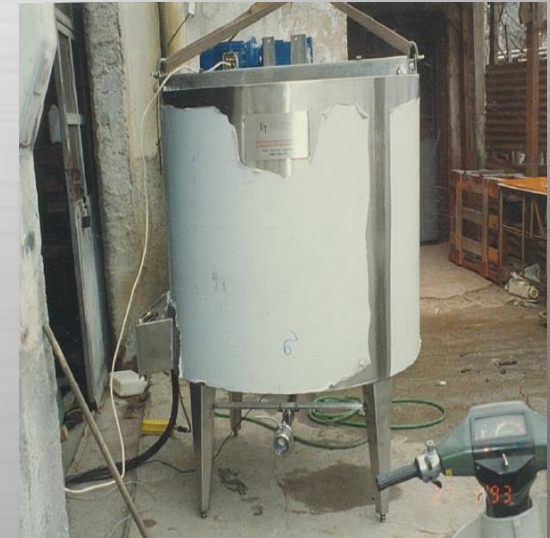
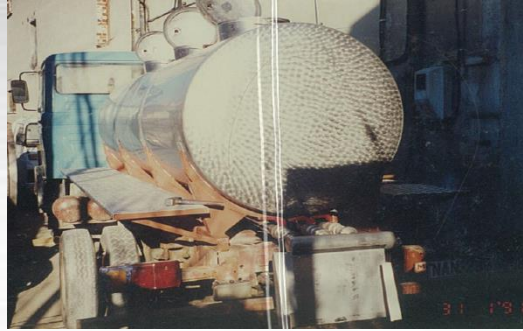
- **1984:** opens the first workshop for stainless steel constructions on Giannitson Street in Thessaloniki, by Anastasios Kapnopolis and Spiros Papafloratos.



- **1988:** The company obtains the certification to produce and trade machinery and components for the food industry, while at the same time creating a commercial branch at 174 Giannitson, Thessaloniki.



- **1988 - 1996:** In the product range of I.S.T. Many basic machines for processing, transporting and storing milk are entering dynamically





- **1997:** a milestone year for the I.S.T. , as it is installed in new facilities in the Industrial Zone of Sindos.

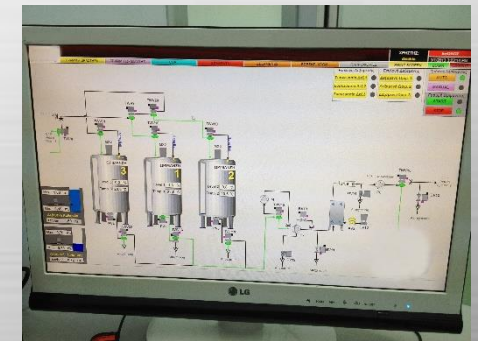
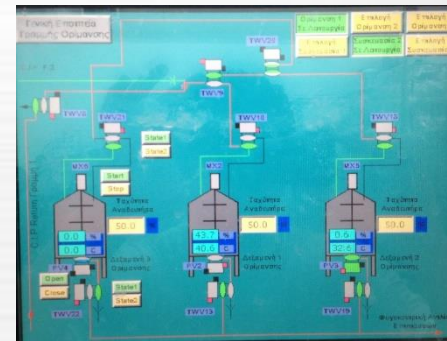


- **2001:** In the production line of the company, the milk cooling tanks enter, where immediately their reputation is created as very reliable and excellent quality machines, against the competition until today.





- **2005:** the first automated line of cheese making



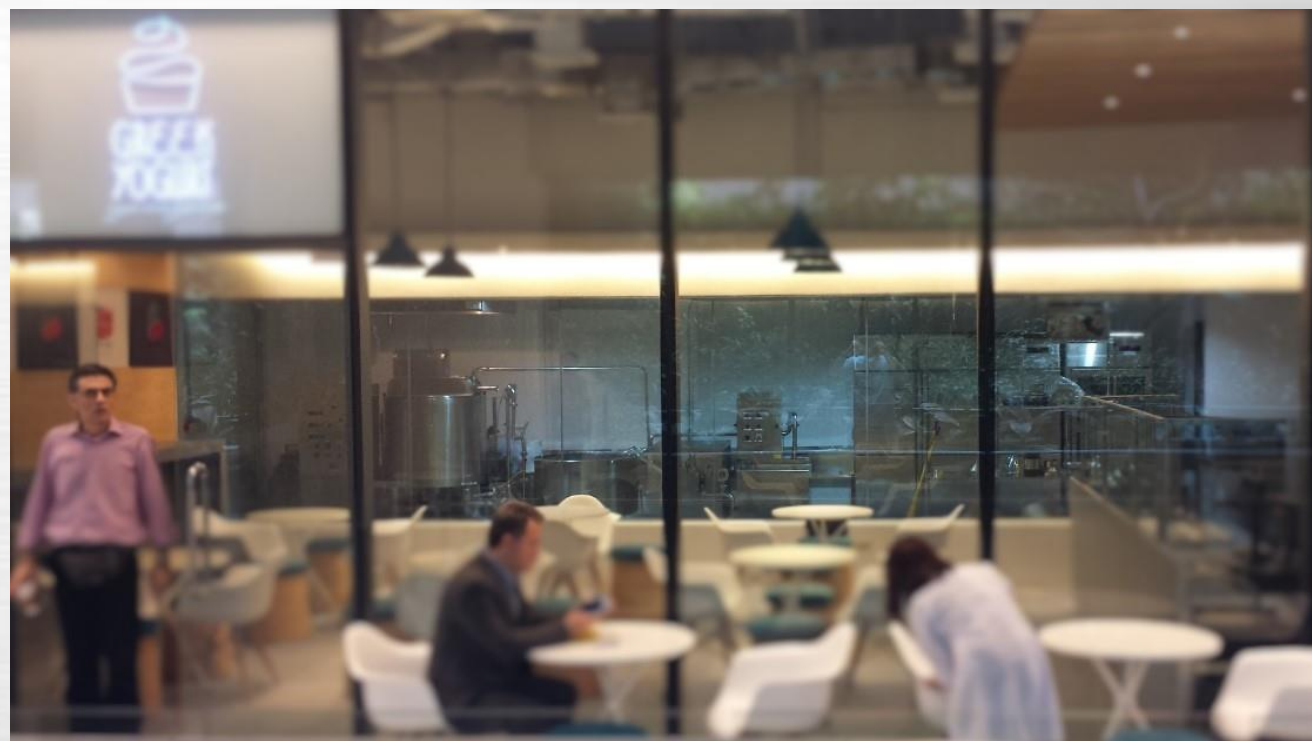
**2009:** The company manufactures and installs the equipment of the production unit of powdered yoghurt, automatic operation, with P.L.C. (Power line communication) and operating and monitoring system SCADA





- **2010:** Special joy and honor of INOX STEEL TECHNICAL, as it becomes the first Greek manufacturer of feed transport tanks up to 32,000 kg cargo.

**2012:** INOX STEEL TECHNICAL's export activity expands to third countries outside the EU and specifically in the Philippines, where sends and installs a mobile unit for the production of strained yogurt, in a Mall for the production of the first Greek Yogurt there, where consumers had the opportunity to see how the strained yogurt is produced as they enjoy it deliciously.







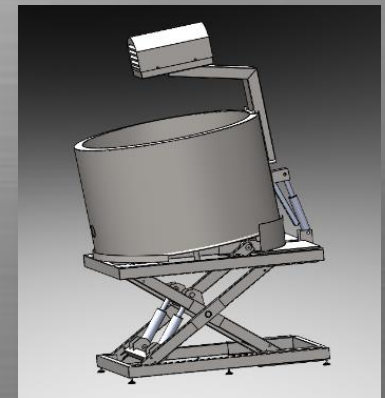
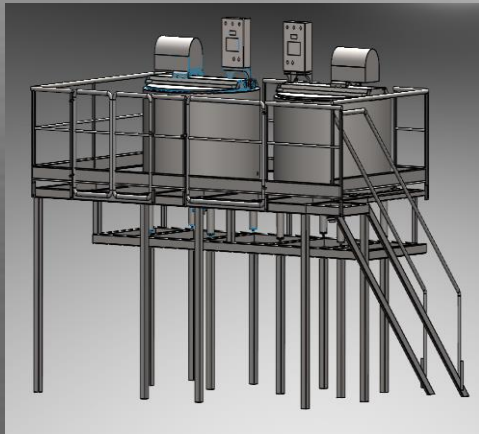
**2014:** The company designs and manufactures closed type milk preservatives



**2015:** Trained and certified by authorized personnel to install the milk separators that supplies

**2016:** Designs and manufactures a cheese maker with a practical lifting base to earn space

**2017:** Twin kettles with platform for roasting nuts





**2018:** Double cooling silos



**2019:** Design and construction of closed pasteurization with state-of-the-art operation and control



**2020:** Construction of a complete halloumi production line



- **Today:** the creativity and improvement of INOX STEEL TECHNICAL continues ...



# Main Activities

- ❖ Manufacture machinery by stainless steel for the food industry and in particular dairy products.  
Some of these:

- ✓ Milk cooling tanks
- ✓ Batch pasteurizers (Kettles)
- ✓ Plate heat exchangers & Pre – heating systems
- ✓ Different types of tanks (maturing, storage etc.)
- ✓ Transport tanks
- ✓ Washing systems (CIP)
- ✓ Piping networks for milk, steam, superheated water, CIP

- **In stainless steel treatments, passivation is added, for reasons of longevity against corrosion of the metal.**

- ❖ Supply and installation of machinery in collaboration with the largest companies.

For example :

- ✓ Separators
- ✓ Homogenizers
- ✓ Pumps
- ✓ Boilers suitable for the operation of the machines we install

## ❖ SERVICES & MAINTENANCE

We offer our services throughout Greece and abroad

- ✓ We provide immediate technical support
- ✓ We have a wide variety of spare parts if and when needed or requested

## ❖ Special constructions ( **Ask Us** )

- ✓ Having a department of mechanical engineers, after study, design and creation of an appropriate structure of the production process, we can offer special constructions of machines beyond the food industry, and in other industries (Food & Beverage, Cosmetics, Pharmaceuticals, etc.)

We at I.S.T. , we want to make it clear that we are interested in the customer being informed, to help him understand the quality differences during the production process and his final decision to justify both him and us who want a good and long-term cooperation with him .





The quality policy is understood at all levels of the Company through the application of defined procedures and continuous improvement of the Quality Assurance System according to the standard. ELOT **EN ISO 9001:2015**.

*Σχέση*  
**Εμπιστοσύνης**